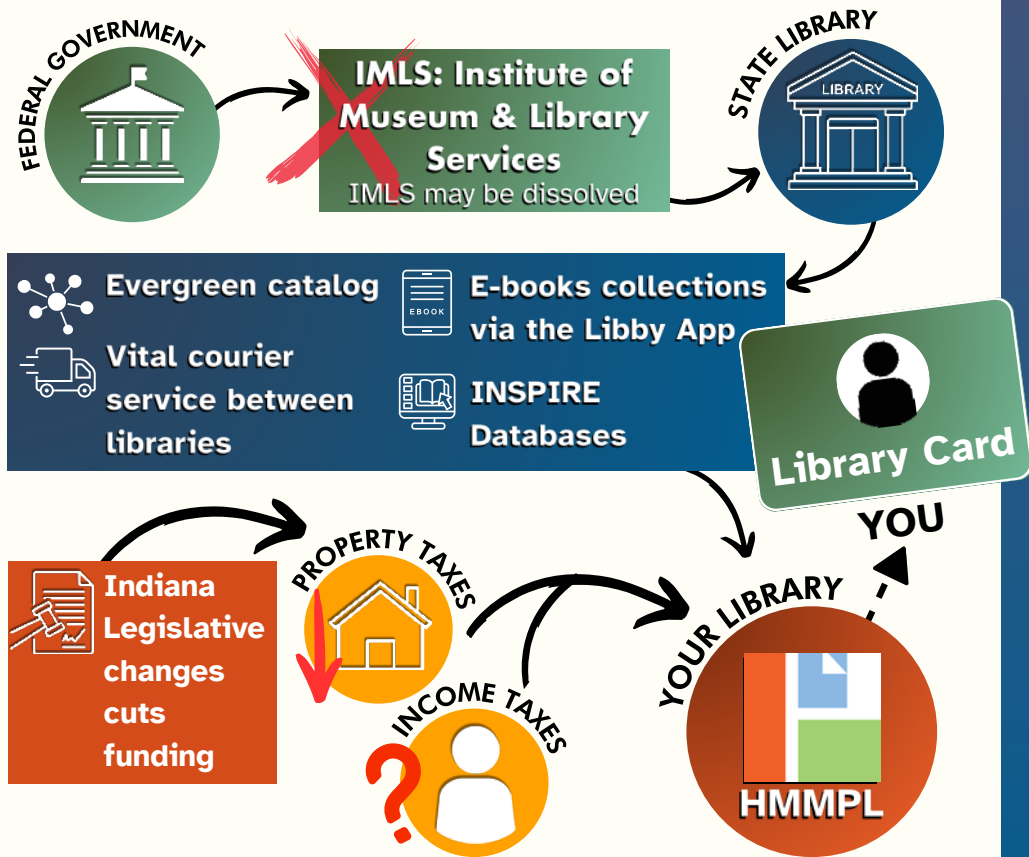


# How Library Funding is at Risk in Indiana



## How will this affect you and HMMPL?



Minimal staff



Limited or no digital collections



Very limited hours



Few programs offered



Only items available are those in the building

# How You Can Help HMMPL



- 1 Contact your federal, state, and county representatives**  
Let them know how the library has personally affected you and how you feel the library is an important part of our community. Search for your elected officials:  
<https://www.in.gov/sos/elections/voter-information/who-are-your-elected-officials>



- 2 Donate to HMMPL**  
Help the Library monetarily as we stretch our budget. Scan to donate now!



- 3 Join or follow library advocacy groups**  
Stay up-to-date on issues affecting libraries and ways you can help by following groups such as ALA, ILF, or EveryLibrary.org, or our HMMPL Facebook page.



- 4 Join the Friends of the Library**  
Help these dedicated volunteers as they fundraise year-round for the Library. Visit [bit.ly/HMMPLfriends](https://bit.ly/HMMPLfriends)



- 5 Get a library card**  
Already have a card? Great! Reach out to friends and family, and encourage them to get a card too.



- 6 Use the library**  
Checking out materials or using spaces help increase our stats, which helps with library advocacy.

